

The **SYLVANIA BEAM**

OCTOBER, 1947

Volume VII Number 10



Published Monthly for Employees of Sylvania Electric Products Inc.

MILL HALL PLANT

*The
Mill Hall
Story*
PAGES 1-2-3

EDITORIAL

HOW THE ORDERS ARE COMING

While sales alone do not always spell success, they give a good picture of activity. With September sales figures entered in the books, it is now possible to review the sales results of the various divisions and subsidiaries of the Company for the first nine months of the year.

Radio tube production at Sylvania rose to new records toward the end of 1946 to meet the great backlog of pent-up demand. By the first part of the year, the needs of set manufacturers had been met. Demand fell off sharply. Since that time, however, demand and production have been gaining steadily until today they again stand at high levels.

Demand for incandescent lamps seemed almost without limit up to about April of this year then orders dropped off rapidly. A definite recovery occurred in September.

Fluorescent fixture demand also fell off last spring and operations continue at a lower rate though still far above prewar levels.

Fluorescent lamp demand has continued extremely good. Little sign of slackening is in sight.

The Tungsten & Chemical Division has shown a steady growth in sales through the year to date.

In the Electronics Division, sales are running steadily above last year and the backlog of unfilled orders is at present the highest it has been so far in 1947.

The International Division's foreign business boomed to an all-time record the first half of this year, falling off after this time because of the scarcity of dollars abroad. The nine months' figure is easily the highest the Company has ever achieved.

Shipments of radio sets by Sylvania's subsidiary, Colonial Radio, are heavy. The wire recorder is on sale in Sears stores.

Wabash photoflash lamps continue to be heavily back-ordered. Production is trying to catch up in this business which has undergone a fundamental growth in the past few years with the introduction of flash technique to amateur photography.

Thus, the different Sylvania products have taken turns in carrying the load with the net result that overall business of the Company has continued at a good level for the first nine months of the year.

AUGUST SAFETY RECORD

Most of Sylvania's plants went through the month of August with no lost-time accidents, according to reports issued by James J. Lawler and Russell C. Tirrell, Area Safety Engineers. In the Pennsylvania area, Altoona, Brookville, Emporium Receiving Tube, Emporium Cathode Ray, Emporium Mechanical Development, Emporium Parts, Huntington, Mill Hall, St. Marys and Williamsport Electronics had no accidents.

Perfect records in the New England-New York area were chalked up by Boston Electronics, Salem Mechanical Development Plant, Lowell Plant, Central Engineering-Long Island, Salem-Boston St. and Salem-Loring Ave.

Two lost-time accidents occurred at Ipswich, Jamestown and at the Montoursville Tube Plant and one each in Warren, Towanda and Danvers.

THE SYLVANIA BEAM

Published monthly by and for all employees of Sylvania Electric Products Inc. Address news and editorial material to the Company's executive offices, 500 Fifth Ave., New York 18, N. Y. Material may be reprinted with credit to "The Sylvania Beam." Editor-in-Chief: Elliott W. Robbins. News Editor: Harold M. Turner, Jr. Corresponding Editors: Margaret Bradstreet, John A. Gilmore, George Manolakis, Viola Johnson.

... TO CHECK YOUR SOCIAL SECURITY ACCOUNTS

Complete Social Security records have been filed with the government through June 30, 1947. Any Sylvanians who desire to check the amounts posted to their credits can do so by communicating with the Social Security Administration, Candler Building, Baltimore 2, Md. Form OAR-7004 postcards for this purpose are available at plant personnel offices.

* * *

SYLVANIA SALESMEN IN I. E. S.

Mr. Lester A. Johnson, Sylvania's representative in Omaha, has been made Chairman of the Cornhusker Chapter of the Illuminating Engineering Society there. Sumner Harris, also of Sylvania, is Chairman of the South Texas Chapter in Houston; and J. H. Edwards, the Company's Field Engineer in Kansas City, is Chairman of the Heart of America Section in Kansas City.

* * *

ORGANIZATION ANNOUNCEMENTS

Mr. J. E. Fitchett has been appointed Supervisor of Industrial Engineering at the Boston Electronics Plant, reporting to Mr. Don J. McNeil, Manager.

* * *

Mr. Regis A. Vogt has been appointed Division Manager of Production Planning, reporting to Mr. J. Clement Farley. Mr. Vogt was previously in charge at the Jamestown, N. Y. Parts Plant.

* * *

Mr. George F. Wollinger, Jr., has been appointed Staff Supervisor for Production Control reporting to Mr. Charles H. Gleason, Manager of Cost Control and Analysis at New York. Prior to joining Sylvania, Mr. Wollinger was with the Glenn L. Martin Aircraft Company.

* * *

Mr. Leonard G. Taggart has been appointed Manager of Purchasing of the Radio Tube Division, reporting to Mr. H. Ward Zimmer at Emporium. During the war, Mr. Taggart was stationed in the European theater and rose to the rank of Colonel.

* * *

Miss Alice Rush, for two years Commissioner of Conciliation with the U. S. Conciliation Service, has joined the Industrial Relations Dept. in Flushing as an Industrial Relations Analyst.

* * *

Mr. Harold M. Turner, formerly with the Associated Press and the Newell-Emmett Advertising Agency, has been appointed News Editor of The Beam.

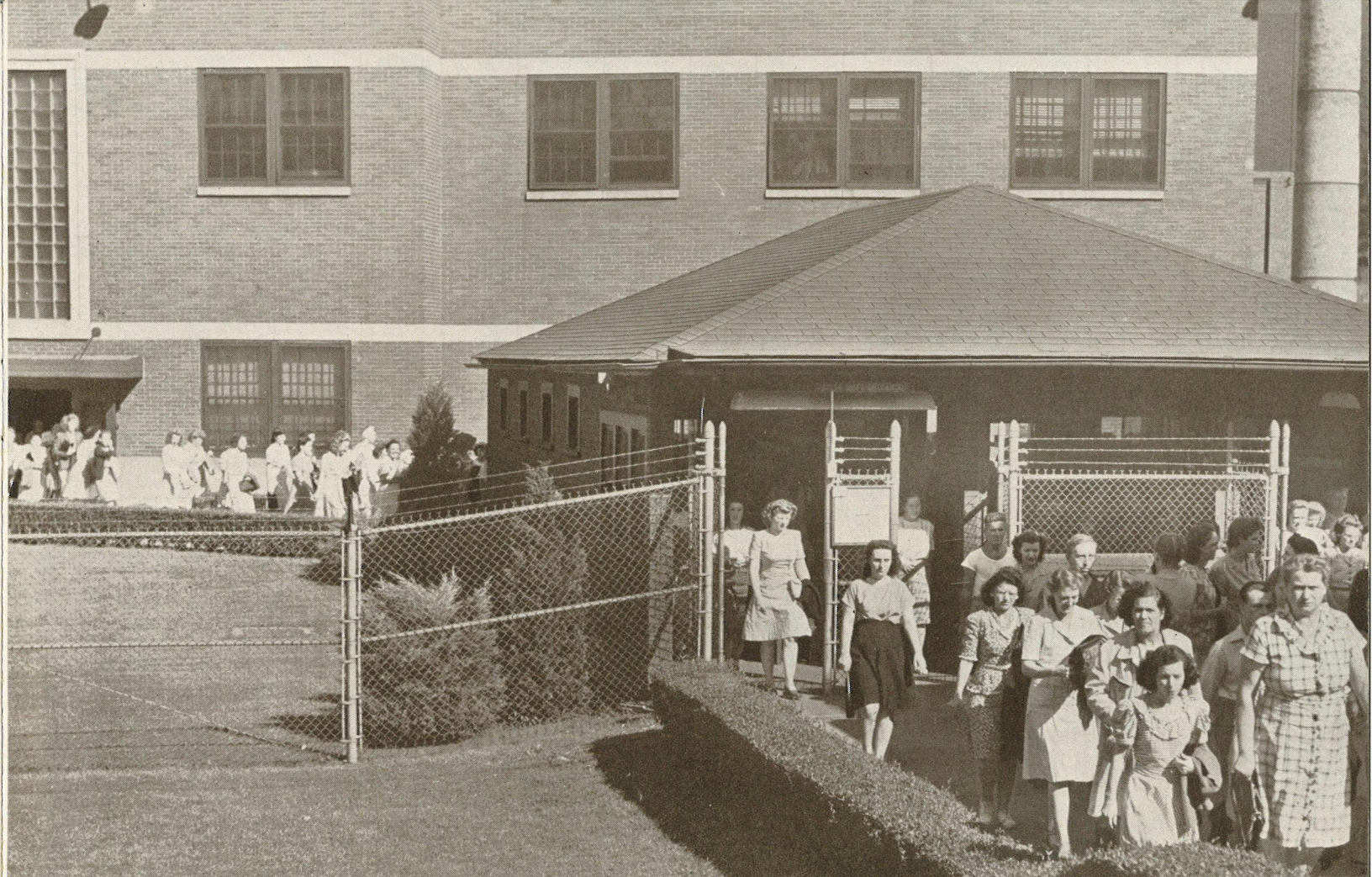
* * *

EHLERS GOES TO HUNTINGTON

Herbert Ehlers, formerly at Emporium, has been appointed Manufacturing Manager of Special Tubes for the Huntington Plant.

This Sylvania unit is due to expand with increasing contracts for special type tubes and government business.

(For other organization announcements, see Page 5.)



DAY'S WORK DONE, Mill Hall employees pass through their gate on way home.

MILL HALL:

FAMOUS WAR PLANT IS NOW EFFICIENT PEACE TIME PRODUCER

SYLVANIA'S Mill Hall Plant in central Pennsylvania is one of five Sylvania units that manufacture radio receiving tubes. The others are Altoona, Brookville, Emporium (in Pennsylvania), and Huntington, W. Va. The Montoursville, Pa. Plant is still making radio tubes but, of course, is scheduled eventually to work on photoflash bulbs exclusively.

Mill Hall is a small community in central Pennsylvania of the type **READER'S DIGEST** meant when it wrote its article about Sylvania, "Big Stuff in Small Towns." Fishing is really tops. Trout streams nearby are among the most celebrated in this section of the United States and when season opens, fishermen pour in from all over.

There is wild country around Mill Hall. The woods abound with deer, bear and even wild turkeys. Julian Rohe, Supervisor of the Finishing and Shipping Dept., who is a long-time resident,

lists the wild life and includes copperhead snakes.

"Shoot 'em if you have a gun; run if you don't," is his prescription.

Mill Hall itself has a population of around 2,000 with a burgess and town council. It is three miles away from Lock Haven which has a population of 15,000 and is the county seat of Clinton County. Lock Haven is the railroad stop people use when they come to Mill Hall by train. The community is about 20 miles north of the geographical center of Pennsylvania (properly named Centre Hall). Mill Hall is set in a valley. Fishing Creek runs not too far from the plant, flowing into Bald Eagle Creek, which in turn finds its way to the Susquehanna River.

In the immediate area are paper mills, manufacturers of dye stuffs, building supplies, furniture and brick as well as the Piper Aircraft Company, makers of

the famous Piper Cub. Brick making began with the Indians who inhabited nearby Queens Run.

The Sylvania Mill Hall Plant opened May 15, 1942 as a war plant to manu-

JANE CRISPIN IS MISS MILL HALL, 1947





FIRST AID. Ruby Bay poses in the MILL HALL first aid room while Nurse Alice Scott takes care of her finger.

Mill Hall Tube Plant

Plant Manager:
HENRY G. HARTWELL

Supervisor:	Plant Accounting	KENNETH A. BISSIG
Supervisor:	Personnel	ELWYN W. BLANCHARD
Supervisor:	Production Control	FRANK T. HOFFMAN
Supervisor:	Industrial Engineering	G. L. FULLERTON
Supervisor:	Mechanical Maintenance	RUSSELL K. FULGER
Supervisor:	Electrical Maintenance	CARL A. BULLOCK
Supervisor:	Plant Maintenance	ROBERT H. LEE
Supervisor:	Finishing & Shipping	JULIAN C. ROHE
Supervisor:	Product Engineering	EDWARD A. GUNNING
Foreman:	Grid Dept.	HERBERT P. HASSELMAN
Foreman:	Stem Dept.	LEONARD A. ENGEMAN
Foreman:	Filament Dept.	KERMIT A. CROSS
Foreman:	Mounting Dept.	ERNEST J. CROSS
Foreman:	Units Dept.	JOSEPH CONNORS



PHOTOGENIC MILL HALL GIRLS, *l to r, Shirley Peters, Nancy Neff and Janet Shoemaker.*

facture the then new and super-secret radio proximity fuze tube. Sylvania had made some tubes on the location back in 1929 but closed the plant down following the stock market crash that year. Employment at the time operations began in 1942 was 126. A wartime peak of over 2600 was reached just before V-J day. Nearly 40 of the original people who worked that first day are still in the plant, many promoted to higher positions; others at work for Sylvania in other plants. During the war, employees came by the bus load from outlying districts. Today employment is something under 800 and the product, of course, is regular commercial radio tubes. The decline in employment has, rather logically, been accompanied by improvement

MILL HALL MONITORS, *l to r: Maretha Confer, Lucille Dupree, Nelle Pletcher, Sally Matter, Luella Smith, Irene Lucas, Kathleen Ryan, Dorothy Confer and Virginia Thompson. Most of the girls have about four years' service.*

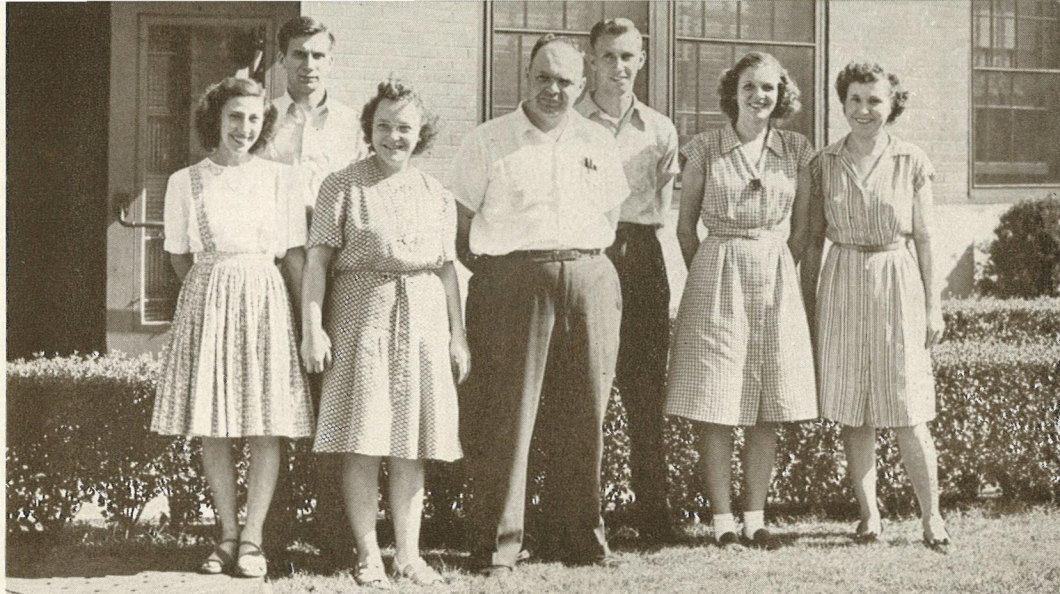


in the overall attendance record and most of the employees now come from within a reasonable distance of the plant.

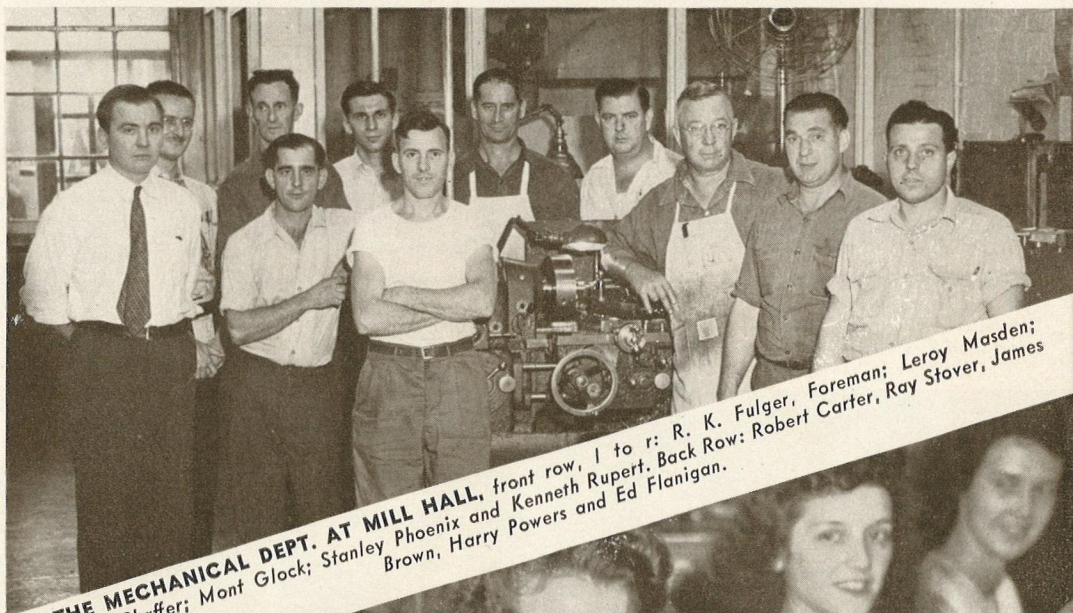
The secret fuze tube started out as a tiny item $\frac{3}{8}$ of an inch in diameter. Eventually a still smaller tube was made that was only a quarter of an inch across. For many months all the Sylvania VT fuze tubes were made at the Mill Hall Plant. Eventually, however, with the opening of Altoona, Huntington and the other SN tube plants, finishing was done elsewhere. At the end of the war, Mill Hall employees won the Army Ordnance "E" with five stars and Mill Hall is believed to be the only plant to have received such an award.

Henry Hartwell, Plant Manager, joined the Company originally at Salem. After working there for several years, he transferred to the Huntington Plant during the war and after V-J day was shifted to Mill Hall as Supervisor of Quality. The plant started with Curtis A. Haines as Manager. After his promotion to General Manufacturing Manager, John Palmer took the helm during the war. W. Herbert Lamb, who had been Manufacturing Superintendent at Mill Hall and had gone to Huntington on the SN project, returned to Mill Hall after the war as Plant Manager, a position he held until his recent promotion to head up the cathode ray tube program.

Like Matt Burns, General Manufacturing Manager of the Radio Tube Division, Henry Hartwell became Plant Manager via the Quality Control route. Right now is a good time to emphasize quality. The shortage of receiving tubes has long since been overcome and customers are beginning to place their orders where quality and service are best.



SYLVANIA EMPLOYEES ASSOCIATION COMMITTEE AT MILL HALL, front row, l to r: Rosemary Verelli; Pauline Gunsallus, Vice President; Stephen G. Cresswell; Dorothy Weaver and Mary Berzansky. Back row: James Brown and John Heichel.



THE MECHANICAL DEPT. AT MILL HALL, front row, l to r: R. K. Fulger, Foreman; Leroy Masden; Stanley Phoenix and Kenneth Rupert. Back Row: Robert Carter, Ray Stover, James Brown, Harry Powers and Ed Flanigan.

MILL HALL MOUNTING TEAM (left to right): Linnie Steckenfinger, Ernestine Watkins, June Lachot, June Brownlee, Ann McGill.





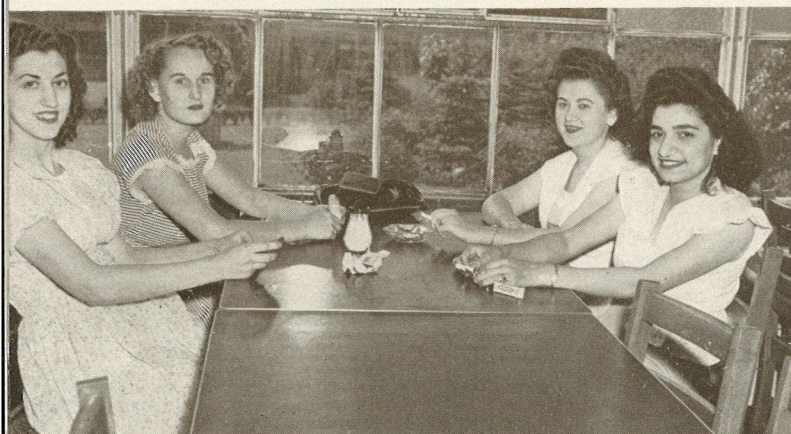
ATTRACTIVE MOUNTERS AT EMPORIUM, l to r: Hazel Keller, Cerny Leamer, Jennie Brne and Betty Owens.



THE CHAMPIONS POSE. Champion mounting team at Emporium has picture taken outside plant. L to r: Pauline Gabor, Lois Passmore, Marie McHenry, Alvira Beck, Neva Collins, Betty Vail, Dorothy Clark. This group compiled fine record during past year.



WELDING TUBES AND MAKING TOPS are, l to r: Martha Lenze, Mildred Smith, Edith Euberti and Delores Wennin.



RELAXING AT EMPORIUM'S CAFETERIA are, l to r: Jean Bauer, Naomi Schager, Vera Gambol, and Pauline Moscato of the Filament Dept.

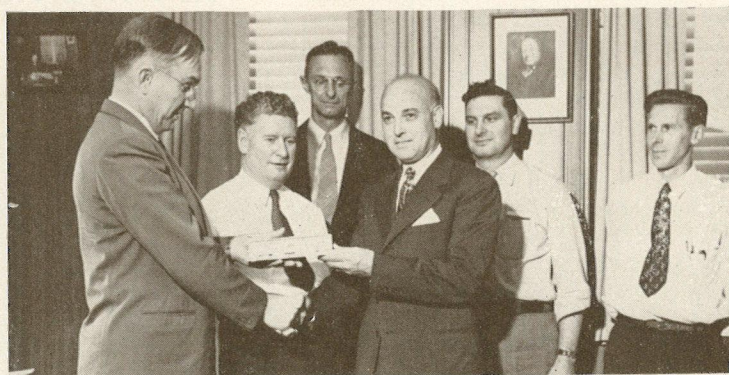
EMPORIUM: IT'S SHRINKAGE RECORD AMONG BEST

From 1946 up to the present time, the Emporium Radio Tube Plant has been the most frequent leader in the attainment of low shrinkage or waste on radio tube production, this despite the fact that it is now manufacturing 30 to 40 different types in a single month.

Production of tubes at the present is high and demand is good.

The supply of labor is short. Mounters particularly are in demand. To offset the shortage in help, the plant is using two feeder plants for mounting operations.

The Cathode Ray Tube plant under the leadership of General Manufacturing Manager W. Herbert Lamb will be an important part of the business at Emporium. Cathode ray tube production is considerably mechanized so that production requires a relatively small number of employees. However, the dollar volume on this product is large and is expected to grow.



MATT BURNS JOINS QUARTER CENTURY CLUB: The General Manufacturing Manager of the Radio Tube Division receives his gold watch and pin from H. Ward Zimmer, left, and Mark Orr. George Rishell, Martin Hasselman and George Kinsler aid ceremony.



OPERATING A SEALEX are, l to r: Catherine Scanish, Sealex operator; Kathryn Motz, pre-heater operator; Florence McCool, utility operator.



VISITORS AT EMPORIUM. The Reverend W. W. Banks of Trinity Methodist Church in Clearfield and a former Minister at Emporium; Arthur Schultz; Mrs. Banks and the Reverend J. M. Brennan, retired Minister of the First Methodist Church in Emporium, studied Sylvania equipment with interest.

ORGANIZATION ANNOUNCEMENTS



Charles J. Ryan

MR. CHARLES J. RYAN, formerly Division Industrial Engineer with the Electronics Division in Boston, has been appointed Plant Manager of the Williamsport Electronics Plant. He reports to Mr. Edward W. Butler.

MR. CHARLES B. ECKEL becomes Manufacturing Superintendent at the Williamsport Electronics Plant.

MR. GEORGE N. MAHAFFEY will continue to be in charge of the Engineering Section.

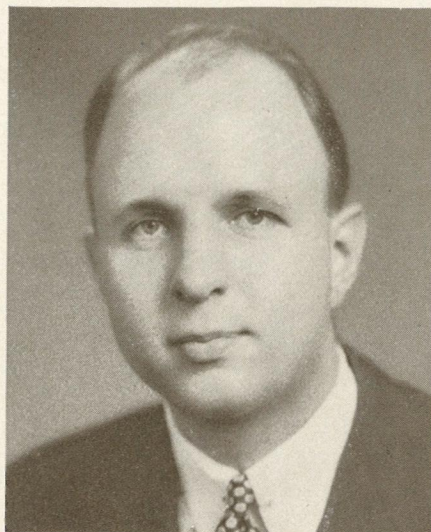
MR. WILLIS C. TONER, formerly Manufacturing Superintendent of the Sylvania plant at Johnstown, Pa., has been appointed Manufacturing Superintendent of radio tube manufacture at the Montoursville Plant. He reports to Mr. M. D. Burns.

MR. ROBERT E. BETTS has taken over the staff function of coordination of Industrial Engineering activities at the Lamp Plants. He will report directly to Mr. Henry F. Callahan, General Manufacturing Manager, Lamps, who is now located in Salem. Each Lamp Plant will continue with its present organization reporting directly to its Manager and Mr. Betts' activities will be in standardizing and assisting in operations common to all plants.

MR. ROBERT F. REED, who has formerly worked with Mr. Betts at the Danvers Fluorescent Plant, will assist in problems of a general nature as a member of Mr. Betts' group.

MR. ALTON C. KENDALL has assumed responsibility for Industrial Engineering and Production Control groups.

MR. JOHN J. DAVIS will head up Accounting Dept. functions, reporting to Mr. Kendall.



W. James Parker

MR. W. JAMES PARKER has been appointed Area Manager of Industrial Relations for the New England section, replacing Mr. William J. Hammond who has left the Company to take over a family business. Before coming with Sylvania, Mr. Parker was for two years Director of Personnel for the Limerick Yarn Mills.

MR. PAUL C. DOW, Purchasing Agent at the Danvers Plant, will report to Mr. Kendall.

MR. WALTER R. JONES, Chief Engineer, has announced the following General Engineering organization reporting to him at Emporium:

Mr. G. L. Rishell—Assistant to the Chief Engineer

Mr. N. L. Kiser—Chief Design Engineer.

Mr. H. E. Ackman—Manager, Standards Engineering

Mr. R. F. Carlson—Manager, Engineering Services

Mr. E. E. Overmier—Manager, Commercial Engineering

Mr. V. H. Campbell—Section Head, Electrical Design

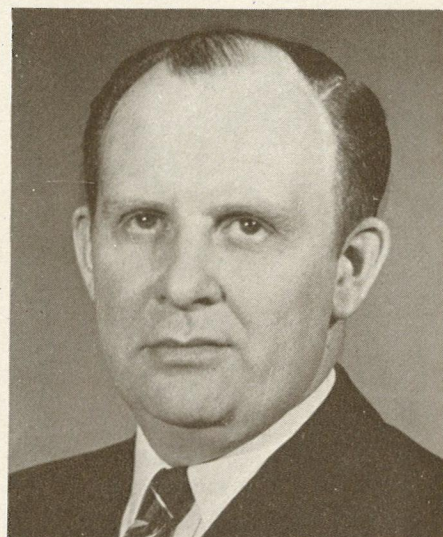
Mr. J. V. O'Neill—Section Head, Mechanical Design

Mr. C. E. Foster—Manufacturing Superintendent, Product Development Section

Mr. N. J. Reitz—Supervisor Product Engineering, Prod. Dev. Section

Mr. A. G. Smith—Engineering Office Supervisor

MR. ELMONT S. TYNDAL has been appointed Special Representative on Wiring Devices and will report to Mr. P. A. Blanchard.



Calvin J. Sparrow

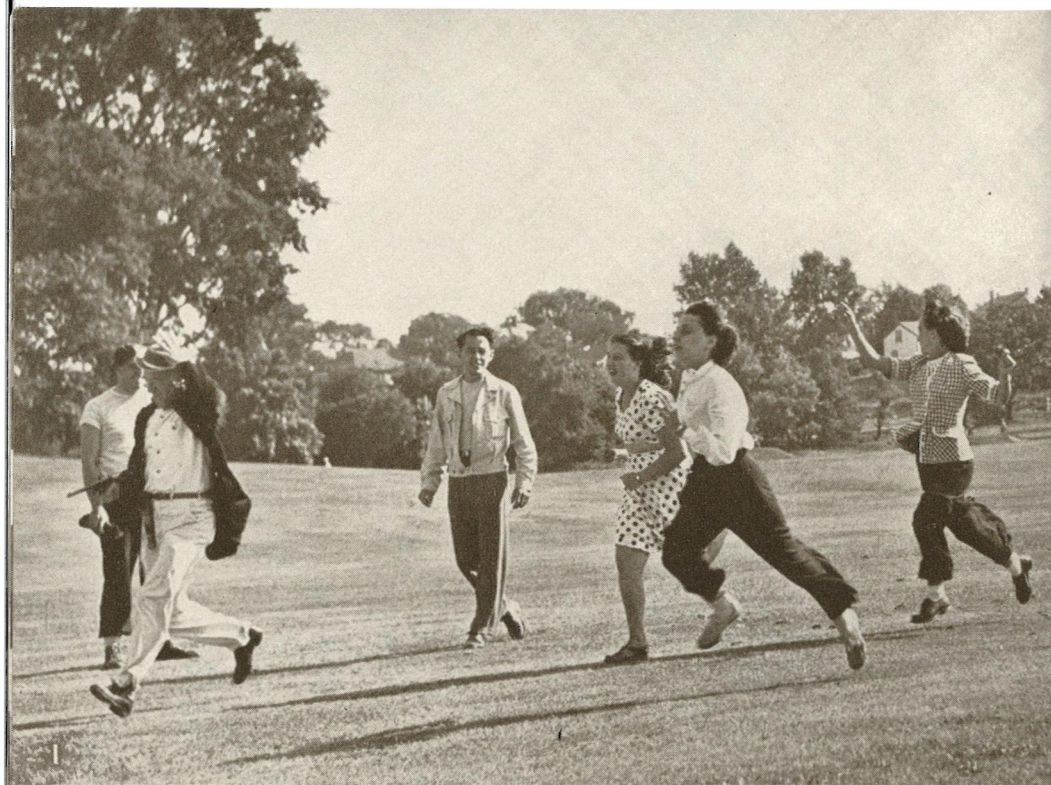
MR. CALVIN J. SPARROW, formerly Manufacturing Superintendent, has been appointed Plant Manager of the Towanda Tungsten & Chemical Division. He reports to Mr. John B. Merrill, General Manager of the Tungsten & Chemical Division. Mr. Sparrow was formerly with the Patterson Screen Co. and transferred to Sylvania when the plant was purchased from Patterson Screen in April 1941.

MR. GRENVILLE R. HOLDEN, Vice President of Sylvania Electric Products Inc., has been elected to the Board of Directors of Electronic Tubes Ltd. of London, Sylvania's British radio tube manufacturing affiliate. Mr. Holden has represented Sylvania in negotiations abroad that resulted in the establishment of new manufacturing facilities in co-operation with companies of other countries. In addition to these duties, he will continue to carry on his general corporate responsibilities in the New York Office.

MR. ROBERT B. GLEASON has joined the Industrial Relations Dept. at Flushing, N. Y., as an Industrial Hygiene Engineer. He was previously with The Fidelity and Casualty Co. of New York as an Industrial Hygienist.

MR. DONALD MADEN has been appointed Supervisor of Planning and Procurement for the Salem Mechanical Development Plant. Mr. Maden is a graduate Mechanical Engineer who has done considerable tool design in addition to his duties in the Company's Design Dept. He reports to Mr. W. K. Anderson.

MR. JOHN E. RHODES has been appointed Supervisor of Plant Accounting at the Salem Mechanical Development Plant. Mr. Rhodes was formerly Supervisor of Plant Accounting at the Lowell Plant.



SYLVANIA

OUTINGS

and INNINGS

1. **STARTER'S FINISH:** Ladies' 50 yard dash at Salem Mechanical Dev. Plant outing becomes posse chase of starter Vincent Dowdell.
2. **EMPORIUM PICKNICKERS** laugh off a hot outing sun with "cooling off" period.
3. **FUELING UP** with Fred Fulle at recent Lowell Plant outing.
4. **A SCENE** at New York Office outing on beautiful Sylvania Center grounds at Bayside, September 19.
5. **CHOW LINE** formed at left for New York Sylvania's. Board Chairman Walter Poor, passing spoon to Conda Boggs, Vice President.
6. **TOWANDA SOFTBALLERS**, near winners in 1947 City League race. "Wait'll next year" is war cry now.
7. **FLUSHING-BAYSIDE RESEARCH DEPT.** makes one very big happy family at September 6 outing.
8. **SPRINGBOARD TO BEAUTY:** here is Miss Cameron County, or Marion Gulnac of Emporium Advertising Dept., who went on to semi-finals of "Miss Pennsylvania" contest at Harrisburg.
9. **ANOTHER BEAUTY:** Margaret Marcavitch who was runner-up to Jane Crispin in Mill Hall's plant beauty contest.
10. **EYES HAVE IT** at Ipswich Product Engineering outing. Mrs. John Shaheen is in background.
11. **BOSTON ELECTRONICS** fielded these smiling sluggers at recent plant picnic.
12. **AT THE OLD PUMP!** Members of Danvers Girls' Bowling League launch 1947-48 season with outing at Lake Chebacco in Essex.



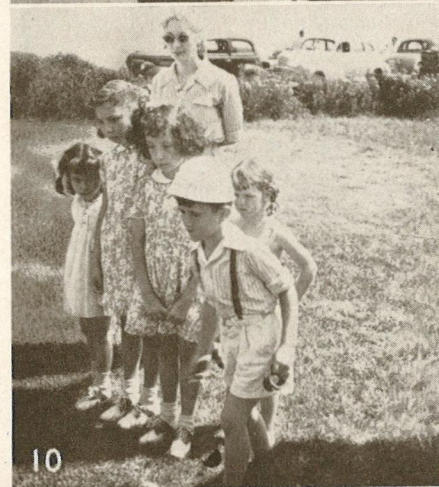
8



9



11



10



12



INQUIRING REPORTER

Question: What's your cooking specialty or favorite dish that you make?

The Place: Various Sylvania plant cafeterias.

Answers



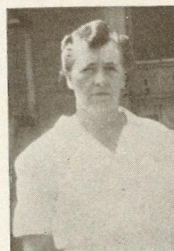
MRS. MABEL BROWN, Towanda: "My boiled dinners. Everyone seems to like these, and there's seldom anything left on the plate when they are served."



MRS. NORA WHITE, Loring Ave., Salem: "Cake! That's my specialty. With me at the ovens, they can have their cake and eat it too."



"AUNT" LEONE VOUGHT, Emporium: "If I had my way, I would fix nothing but salads but I don't have my way."



MRS. FLORENCE KRONE, Mill Hall: "Cherry pie. Everyone in the plant loves cherry pie and I have to make 56 to have enough."



IRENE SNYDER, Mill Hall: "On the average, baked beans and chili soup seem to go the best. We bake our beans here just the same as we do at home."

WHO
DO YOU THINK
YOU ARE
ANYWAY
?

REMEMBER WHEN YOU GOT THIS KIND OF A
TOSSING AROUND WHEN YOU ASKED ANYONE FOR
A LITTLE SERVICE. THAT'S ALL BEHIND US NOW.

Remember
THE CUSTOMER IS BOSS

Shave, Haircut, &
Shine, Mister?



IT MAY NOT COME TO THIS RIGHT AWAY
BUT ONCE UPON A TIME YOU GOT PRACTICALLY
ALL THIS ----- AND GAS TOO.

Remember
THE CUSTOMER IS BOSS

IPSWICHIAN MEET "THE BOSS"

Ipswich is using this "sock-appeal" poster series to drive home for its personnel the idea that "The customer is boss." Posters are the result of a need felt by the Ipswich Fixture Division of recapturing the pre-war concern for the man who "keeps us eating." Ipswich gives the lion's share of the credit for conceiving and selling the idea of the poster series to Burley Cram of the Sales Dept. Actual work of designing and producing posters was done by Ray Southworth of the Advertising Dept.

GROUPS VISIT EMPORIUM PLANT

A series of meetings led by Vice President H. Ward Zimmer have been held at the Sylvania Club at Emporium.

At a businessmen's lunch, Mr. Zimmer outlined briefly the historical background of radio tube manufacturing at Emporium. This was followed by a tour through the plant.

Engineering groups have met at the Club and foremen have had a buffet lunch at which Mr. Zimmer described the various problems of the business. A recent trip to the West Coast brought many of these problems to Mr. Zimmer's attention most forcefully and only prompt action taken while in the office of several important customers prevented loss of orders. "Delays which seemed perfectly normal and justified in the plant are frequently found intolerable by the customer and result in loss of business," Mr. Zimmer points out. Some of these delays have in the past been due to slow handling in the warehouses. Whatever the cause, prompter deliveries have been made a must.

Groups including the local state policemen, doctors, dentists and club

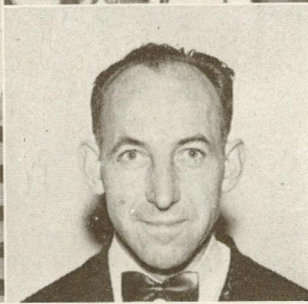
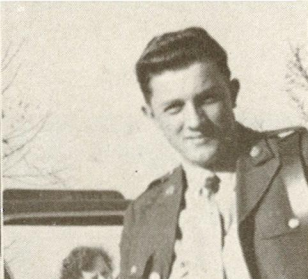
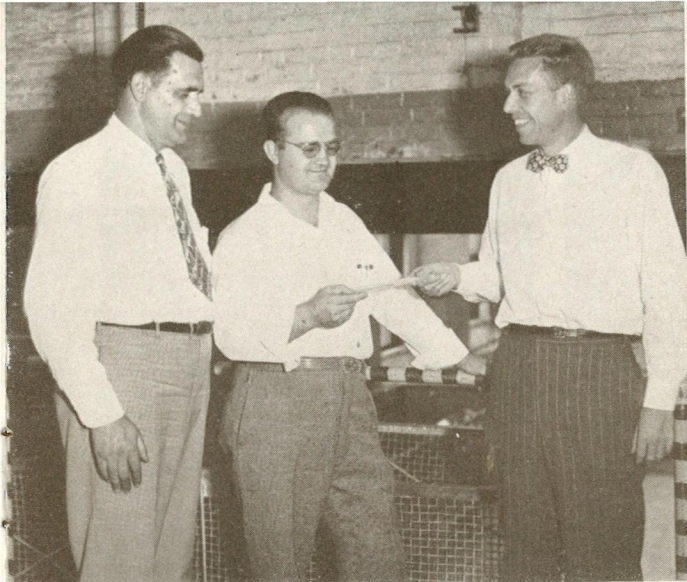
women are included in the schedule of groups who will visit the Emporium plant.

SYLVANIA WAR BABY WEAPON IN PEACE

The V-T fuse, anti-aircraft miracle that Sylvania helped develop and then mass-produce in World War II, now triggers a new aerial forest fire-fighting system under test in Lola National Forest near Missoula, Montana. Specialists of the Army Air Forces, whose job once was setting fire to enemy installations now are reversing the procedure and extinguishing fires. They're working with the U. S. Forest Service in the experiments.

Controlled fires are lighted in the woods and then a B-29 superfortress is loaded with eight water bombs in its bay. The bombs, which actually are auxiliary fuel tanks, are fitted with proximity fuses and a bursting charge to explode the containers as they fall over the area where the fire exists.

The U. S. Forest Service had attempted to quench the forest fires previously with water bombs but it was not feasible until development of the proximity fuse.



HOOK, LINE, and SYLVANIANS



LADY IZAAK: Ruth Ohl, Units Dept., Mill Hall, shows how the fish were biting on her vacation at Sharbot Lake, Ontario.

\$YLVANIA PAY\$ TO \$UGGE\$T

Sylvania paid Peter Gianakis, IPSWICH, \$325 for suggesting the degreaser pit, his third money-making idea. The pit permits more efficient handling of parts from Degreaser Room to Spray Room and outmodes the old belt conveyor. In above left, Peter, 30 years old, and father of two sons, receives his check from Plant Manager Bob Franklin with Joe Russi, Paint Shop Foreman, standing by.

Sylvania paid Gerald Rougeux, EMPORIUM, at upper right, \$46 for sparking an idea to straighten pin trays in the Furnace Room. Previously, trays would warp and had to be discarded after several firings. Gerald's metal block forms, pounds out, re-forms, and doubles the life of the trays.

Sylvania paid Daniel Ingram, EMPORIUM, at lower right, \$25 for an improved design for the clutch on the sealing machines. His design incorporating a new spring arrangement saves good tubes from shrinking, improves machine equipment and shortens maintenance time. To Peter, Gerald and Dan and 43 more suggestioners, Sylvania paid a total of \$1,077.92.

It's only good dollars and sense to suggest.

SUGGESTION WINNERS

DANVERS. Eino Mackey, IM, \$10; IM, \$10; Thomas Berran, IE, \$5; IE, \$3; Katherine Taragano, IE, \$5; Marshal Rushworth, SA, \$3; Edward Fallis, GI, \$3.

IPSWICH. Peter Gianakas, IE, \$325; John MacDonald, ID, \$40; Charles Bayley, ID, \$25; George Chadwell, IM, \$15; IM, \$15; IC, \$5; Ethel Peterson, IM, \$10; Edward

Leach, ID, \$10; Edna Bowman, IM, \$10; Evelyn Miller, IM, \$5; Wallace Makar, ID, \$5; Dorothy Blair, IM, \$5; Maurice Blaquiére, IE, \$5; Harry Mayo, IC, \$5; Edward Pulsifer, IC, \$5; Charles McPhilomy, IM, \$5; Richard Courage, ID, \$5; Marjorie Manthorne, SA, \$3; Charles Lee, SA, \$3; Muriel Horsman, SA, \$3; William Matous, SA, \$3; Martha Audet, IC, \$3; John Dragoni, IE, \$3; Elizabeth Hulbert, SA, \$3.

BOSTON ELECTRONICS. Anthony Pisa, IM, \$111.36; Joseph Manzi, IM, \$86.57; IM, \$10; Herman Nowak, IM, \$42.05; IM, \$41.84; IM, \$5; IM, \$5; IM, \$5; IM, \$5; Donald Derflinger, IM, \$25; Stanley Smith, IM, \$24; IE, \$5; Raymond St. Amand, IM, \$10; SA, \$3; David Knowlton, IC, \$5; Hiram Thompson, SA, \$5; William DeFlorio, IE, \$5; Madeleine Gilligan, SA, \$3; Francis Candear, SA, \$3; Ruth Trentini, IM, \$3.

EMPORIUM. Gerald Rougeux, IE, \$46; Daniel Ingram, ID, \$25; Wm. Whiting, IM, \$20; John Smith, IE, \$13; Emma Stuckey, GH, \$3; Nina Beach, I, \$3.

IC, Improved Conditions; IE, Improved Equipment; ID, Improved Design; IM, Improved Method; I, Improvement; GH, Good Housekeeping; SA, Safety; GI, General Improvement; AA, Additional Award.



ON LENS-LEASE TO THE BEAM this Niagara snapshot was taken by Paul LaFrance of Boston Electronics.



CHAMPION Don Kerstetter, angler complete, of Emporium, displays prize-winning 17½" brown trout hooked in six-countywide fishing contest in Pennsylvania.



BIG FISH IN LITTLE PALMS: Buddy Kerstetter respectfully submits that his father's brown brook trout was biggest and best of the contest.

MORE FUN THAN FISH

Don Kerstetter, Emporium, is king fisherman of Cameron County, Pa., and five others. He won his crown in a 2-month contest that was long on fun and short on fish. Don's catch, 17½" brown trout, won him a fly rod and a year's subscription to "Field & Stream."



NEW OFFICERS of Sylvania Men's Club, Towanda, (back row): Francis Saxe, director; Dick Van Auker, past president and director; Vic Potter, director. (Front row): Hershey Towner, secretary; Harry Minard, president; James Corbin, vice president; Harold Sherman, treasurer.



THE REAL HOEDOWN. Altoona's Barbara Butcher demonstrates in her home garden where she grew a rich summer crop of potatoes, corn, tomatoes and beans. Her potato yield was 15 bushels. Her mother canned 36 quarts of Barbara's tomatoes and beans and 35 quarts of corn.



NEW MEMBER of the Quarter Century Club is Robert F. Reed, an industrial engineer in the Lamp Division at Salem's Boston Street Plant. His wife is a former Sylvanian. With their children, Bob, Jr., and Lois, they live at 462 Loring Avenue, Salem.

SYLVANIAN SEARCHLIT TO SAFETY BY YOUTH, 16

Reginald Hartley, 29, of Boston Electronics, and a friend, Eliot Flachbart, credit their lives to a 16-year-old youth and his searchlight. Capsized in darkness September 10 during a sail in Marblehead waters, the pair's cries attracted attention of young Richard L. Phelan at his shoreside home. Phelan's skilled handling of a searchlight from his piazza guided a police rescue party to Hartley and Flachbart.

SOUNDS FISHY

Harry Troy of Altoona's Machine Shop has a method of weighing fish before he even has them on the hook. One got away from him recently that weighed all of two pounds, six ounces. When Art Stuart, Stem Dept. Supervisor, asked him how he knew its weight, he answered, "It had scales on it."

NEW WAREHOUSE TO RISE ON EMPORIUM PARKING LOT

As soon as steel shipments arrive, immediate construction will begin on a new warehouse to provide 35,000 square feet at the Emporium plant. In the meantime, a new parking lot has been laid out in front of the plant.

DEATH

MARTIN HORGAN, 20, died suddenly at his home in Beverly on September 7. At the time of his death, he had been employed in the Mount Dept. of the Danvers Plant for approximately six months. He is survived by his parents, a sister and a brother.

THREE SYLVANIANs JOIN QUARTER CENTURY CLUB

Three Sylvanians who recently passed the 25-year service mark for induction in the Quarter Century Club are Matt Burns, General Manufacturing Manager of Radio Receiving Tubes at Emporium, and Clara L. Mitchell and Robert F. Reed of Salem's Boston Street Plant.

At a brief ceremony conducted by Ward Zimmer and Mark Orr, Burns received his gold watch and Quarter Century Club pin. Coincidentally enough, the next day he celebrated his 26th wedding anniversary.

Clara Mitchell came to Sylvania as a stem maker on August 29, 1922, and her present job is mounting R-40s. At a cafeteria dinner tendered to her by plant officials, friends and other Quarter Century members, she received a corsage and gift. Clara's hobbies are making hook rugs and collecting recipes from restaurants and hotels she visits.

Joining Sylvania on July 10, 1922, Bob Reed was assigned to the Quality Dept. under the supervision of Mr. R. C. Tirrell, becoming his Assistant a year later. On December 28, 1926, he was transferred to the Engineering Dept. and ten years later, on December 26, 1936, he became a Standards man in the fluorescent group.

Bob lives at 462 Loring Avenue, Salem, with his wife, a former Sylvanian, and their two children, Robert, Jr., and Lois. His hobbies are winter bowling and working around his house in the summer.

JAMESTOWN PLANT ADDS RADIO SET PARTS

The Jamestown, N. Y. Plant of Sylvania has abandoned the manufacture of mica but taken on heavy metal fabricating.

This means that the plant is now making parts for Colonial radio sets, wire recorders and record changers. Many types of parts are constructed including the important basic punch button tuners.

The tool room and design sections are being enlarged to handle the new work and a large barrel plating section has been added.

Weddings

NEW YORK OFFICE

Miss Jeanne Moberg, Office Manager's Section, to Mr. Donald J. Gregory of New Rochelle, on September 13.

Miss Dorothy Dunn, Secretary to Mr. Fred Parker, to Mr. Elliott J. Pratt of Floral Park, on September 20.

Miss Helen Carlson of Warren, Pa., Secretary in Equipment Tube Sales, to Mr. Louis Guglielmo of New York City, on September 20.

Miss Elaine Freeley, Secretary in Electronics Sales Dept., to Mr. Al Viebranz of Electronics Sales and of Milford, Conn., on October 18.

MILL HALL

Miss Philomena Sementilli, Stem Dept., to Mr. Orvis R. Jackson, on August 15. Groom is a salesman.

Miss Virginia Moore, Mounting Dept., to Mr. William Thompson, on August 27. Groom works for the N. Y. & Penna. Co.



BOSTON ELECTRONICS' Helen Harkins who became Mrs. George Foster.

Miss Louise Lamey, Mounting Dept., to Mr. Glen Frankenberger, on August 30. Groom is employed by the Lock Haven Paper Co.

KEW GARDENS

Miss Dorothy Pereda, Kew Administration, to Mr. Louis Salgado, Engineering Analysis, Lawrence St., on July 3.
Miss Genevieve Kelly, Maintenance, to Mr. John Hennessy, on July 5.
Miss Doris Cherry to Mr. Stewart Holt, Glass Room, on July 20.
Miss Evelyn Madden, Micro-Wave Production, to Mr. Alfred Voesack, on July 20.
Miss Blanche Freyers, Plant Nurse, to Mr. George Sarment, on August 2.
Miss Frances Petronelli, Stem Dept., to Mr. Nicholas Bové, on August 9.
Miss Jean Easton, Micro-Wave Production, to Mr. Raymond Axmacher, on August 10.
Miss Rita Emken, Mounting, to Mr. Richard Stehm, on August 16.
Miss Florence Sawyer, Mounting, to Mr. Court Wood, on August 22.
Miss Charlotte Bickel to Mr. Steve Lucas, on August 31. Bride and groom both work in Micro-Wave Development.
Miss Josephine Matranga to Mr. Charles E. Martin, Micro-Wave Production, on September 7.

SALEM—BOSTON ST.

Miss Marion Runnals, Photometric and Life Test Dept., to Mr. Claude Cyr, on September 7.
Miss Rita Bois to Mr. Stephen F. Witwicki, Photometric and Life Test Dept., on September 7.

SALEM GENERAL ENGINEERING

Miss Doris Cunha, Production Development Section, to Mr. Raymond Fontaine, on September 6.
Miss Dorothy Ham to Mr. Edward Durell, on September 14. Bride was formerly employed in Production Development Section.

BOSTON ELECTRONICS

Miss Cecile M. Roberge to Mr. Herman Nowak, Group Leader, Mechanical Maintenance, on August 18.
Miss Helen Harkins, Secretary to Mr. Edward W. Butler, to Mr. George Foster, on September 7. Groom is a Security Salesman for Investors Syndicate, Inc.

Miss Barbara Garfield to Mr. William Brewster Simmons, on September 6. Groom is a student at Harvard College.

DANVERS

Miss Frances Hussey, Commercial Engineering, to Mr. Richard R. Tache, Production Supervisor of Ballast Dept. at Ipswich, on August 16.
Miss Mary Morose, Mount Dept., to Mr. George Michalchuck of Peabody, on September 6.

IPSWICH

Miss Stella Georgeopoulos, Assembly, to Mr. George J. Economides of Boston, on August 24.

BROOKVILLE

Miss Geraldine Reitz, Mounting Dept., to Mr. Robert Gilmore, Tylersburg, Pa., on August 30.
Miss Helen Schreckengost, Mounting Dept., to Mr. James Himes, Punxsutawney, Pa., on July 6.
Miss Emma Lester, Mounting Dept., to Mr. Fred Hetrick, New Bethlehem, Pa., on July 25.
Miss Dora Raybuck, Filament Dept., to Mr. Arthur W. Holt, Brockway, Pa., on July 5.
Miss Geraldine Caylor, Product Engineering Office, to Mr. Walter Ames, Jr., Mayport, Pa., on August 29.
Miss Dorothy Dinger, Product Engineering Office, to Mr. Cleo L. Snyder, New Bethlehem, Pa., on September 20.
Miss Eileen Fox, Base & Bulb Dept., to Mr. Sheridan Thompson, Richardsville, Pa., on September 12.
Miss Sara Carmella, Units Dept., to Mr. Leo Mikelonis, DuBois, Pa., on August 30.
Miss Lorraine Garvey to Mr. George Haythorn, on August 27. Groom is employed at the Jackson China company of Falls Creek.

EMPORIUM

Miss LaVonne Feronti, Units Dept., to Mr. Michael J. McLaughlin, Ridgway, Pa., on September 13.
Miss Irene Graylock to Mr. Robert Rinehuls, on August 21. Bride and groom are both employed at the Emporium plant.
Miss Laura Mulcahy, Office Force, to Mr. Bernard Dolan, on September 9. Groom is associated with his brother in the Hotel Dolan.
Miss Helen Mumford to Mr. C. Emerson Klees, Supervisor Budgets and Accounting Statement Section, on September 8. Groom is the son of Mr. Guy A. Klees, Plant Manager of St. Marys.

Births

EMPORIUM

To Mr. and Mrs. Gordon Nielson, a daughter, Janice Eleanor (6 lbs. 12 oz.), on August 28. Father is a Chemical Engineer in the Product Engineering Dept.
To Mr. and Mrs. Herman L. Johnson, a daughter, Lorraine Marie (5 lb. 13 oz.), on August 26. Father works in the Planning and Procurement Dept. of Mechanical Development Plant.

To Mr. and Mrs. Charles E. Holtz, a son (8 lbs. 4 oz.), on August 27. Father is employed in the Design Dept. of Mechanical Development Plant.

IPSWICH

To Mr. and Mrs. James V. Sands, a son, James V., Jr. (6 lbs. 4¾ oz.), on September 4. Father is Supervisor of Cost Accounting Section.
To Mr. and Mrs. Clarence Conner, a son, Patrick Leonard (7½ lbs.), on August 8. Father works in the Metal Shop.

TOWANDA

To Mr. and Mrs. Leon A. Clink, a son, Donald A. (9 lbs. 4 ozs.), on August 5. Father is in Chemical Production.

DANVERS

To Mr. and Mrs. Frank Makar, a daughter, Diane Kathleen, on August 7. Father is connected with Plant Maintenance Dept.
To Mr. and Mrs. George Manolakis, a daughter, Irene, on September 17. Father is connected with the Personnel Office.

FLUSHING—LAWRENCE ST.

To Mr. and Mrs. David G. Christie, a daughter, Elizabeth Merson (6 lbs. 8 oz.), on September 23. Father is Manager of Personnel Development.

ALTOONA

To Mr. and Mrs. Paul Mauk, a daughter, on August 19. Father is an Equipment Maintenance Mechanic of Units Dept.
To Mr. and Mrs. Paul Shaffer, a daughter, on September 7. Father is a Product Engineer.

BOSTON ELECTRONICS

To Mr. and Mrs. Frank Page, a daughter, Theresa Jennette, on September 2. Father is an Exhaust Operator in Tube Development.
To Mr. and Mrs. Jack Ramsey, a daughter, Linda Theresa, on September 2. Father is an Exhaust Pump Operator in Tube Development.
To Mr. and Mrs. William Woods, a daughter, Pamela Ruth, on September 7. Father is a Development Engineer.
To Mr. and Mrs. Channing Day, a son, Philip John, on August 11. Father is an Assistant to Fred Koury in the Chemical Laboratory.
To Mr. and Mrs. William Prowten, a son, Timothy, on August 29. Father is a Draftsman in the Microwave Section.
To Mr. and Mrs. Gary Riska, a daughter (7 lbs.), on August 29. Father is a Production Engineer.

SAN FRANCISCO

To Mr. and Mrs. Carl S. Long, Jr., a daughter, Margaret Anne, on September 5. Father is employed as a salesman. Mother, the former Marie Schwartz, was Mr. Asher Jones' secretary in the Kansas City office a few years ago.

SALEM MECHANICAL DEVELOPMENT

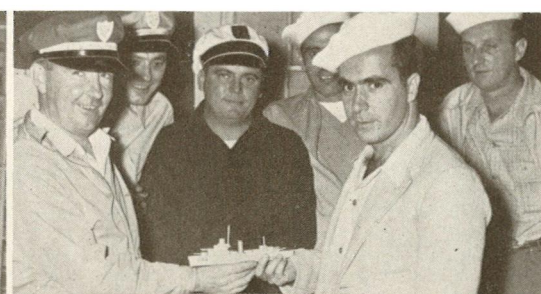
To Mr. and Mrs. Ronaldson Smith, a daughter, Elizabeth Clark (5 lbs. 15 oz.) on August 11.

KEW GARDENS

To Mr. and Mrs. Albert Heitner, a daughter, Cheryl (7 lbs. 11 oz.), on July 29. Father is an Engineer in Advanced Development.



OPERATION MOP-UP is performed by Swabbies Manny Ignacio, Frank Dumeracki and Frank Rizzotti (with pail), strawbossed by Commodore Zdanczewicz, Admiral Crowley and Boatswain Wilkins.



INEFFICIENCY DESTROYER was officially commissioned when Seaman Ignacio presented scale model to Admiral Crowley.



SHIP'S COMPANY musters on weather deck of Boatswain Wilkins' boat before putting out to sea.

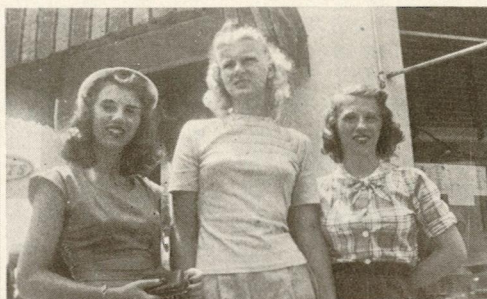
DANVERS FOR STRONG NAVY

The seafaring men and their "braid," pictured above, are more than a group of good-natured gagsters. They are Coating Dept. men who attained the highest powder efficiency in the history of Danvers' Fluorescent Division. They celebrated this feat with the launching of the U. S. Inefficiency destroyer. "Admiral" for the day was Manufacturing Superintendent Paul Crowley. Officers and crew were Vinnie Zdanczewicz, Leon Wilkins, Manny Ignacio, Frank Rizzotti and Frank Dumeracki.

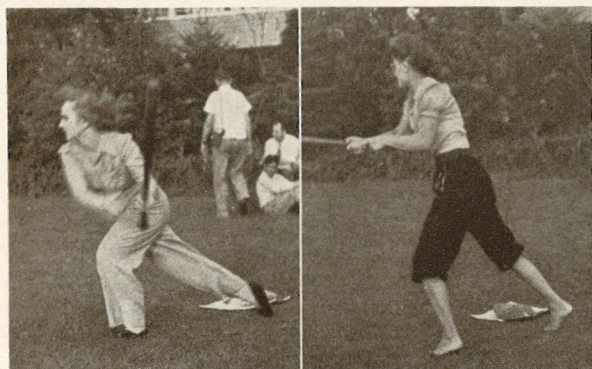
TAKE YOUR PIX



LADY OF THE LAKE: Florence C. Hayes, Office Methods and Planning Dept., Flushing, cools off during sun-drenched New York Office outing at Sylvania Center.



PRETTY TRIO from up Emporium way are L to R: Julia Rodich, Renewal Sales; Shirley Bauer, Personnel; and Louise Rodich, Mechanical Design.



DON'T TAKE 'EM TOO SERIES-LY, but they're sluggers both: Flushing's Joan (Irish) Wiley and Frances (Cookie, not Lavagetto) Kuchenbrod. In two inning Flushing-New York Office game, they helped their side to a 9-2 win.



EVERLAUGHINGLY YOURS is this attractive sextet from the Industrial Relations Dept. at Flushing (L to R in semicircle): Josephine Zorn, Helen Kirkland, Alice Ahearn, Mildred Timm, Theresa Chodkowski, Marion Fitzsimmons.

SYLVANIA POLICY FILE

No. 155 (Revision 2)—An excerpt from the Policy and Standard Practice Manual. These policies are formulated by Sylvania's Management and issued by Industrial Relations.

Educational Benefits

1. In order to encourage self improvement, the Company makes available to employees the following educational benefits. All such benefits are subject to the approval of the employee's department head, the Supervisor of Personnel and the Manager. The Supervisor of Personnel and the Manager will be responsible for establishing the proper procedures for evaluating and approving requests for benefits under this policy.

2. OUTSIDE EDUCATIONAL COURSES—When an employee is assigned to a course as part of his work, the Company will pay the whole cost of the course including books and travel expense. Such books become the property of the Company. None of these payments are subject to tax deductions.

3. In cases where an employee voluntarily elects to take an outside course of study, he will receive help from the Company towards meeting his tuition costs provided the course meets the following requirements:

- a. The course will improve the performance of the employee in his present job.
- b. He must obtain approval before enrolling in the course.
- c. He must complete the course satisfactorily and pay the tuition bill.


On presentation of the receipted tuition bill and a certificate of satisfactory completion of such a course,

the Company will reimburse the employee for 50% of the tuition fee, less tax deductions.

4. BOOKS—The Company will buy any books necessary for a particular job and will pay the whole cost. Such books become the property of the Company.

5. MAGAZINES—The Company now purchases a number of leading trade and technical magazines and journals and these may be obtained by employees who need them by having their names added to the internal circulation list for distribution in the regular factory or office mail. If the employee wishes to subscribe personally to a magazine which will be helpful to him on the job, the Company will pay one-half the subscription price and the magazine may be sent directly to the employee's home or to his company address. Only technical trade or similar magazines that apply to a specific problem will be approved. Such payments are subject to tax deductions.

6. ENGINEERING AND MANAGEMENT SOCIETIES—Where an employee is the official representative of the Company or attends meetings as part of his work, the Company will pay the whole cost of membership. Such payments are not subject to tax deductions. If the employee wishes a personal membership, and such membership will be helpful to the employee on his job, the Company will pay one-half of the membership fee, less tax deductions.



Why the *Lock-In* Tube is at home **IN THE AIR!**

COMPACT . . . MADE TO FIT SMALL SPACES

This famous Sylvania product is ideal for use in air-borne radio equipment—it's so compact . . . has reduced overall height and weight. Further, it has no top cap connection . . . overhead wires are eliminated.

STAYS PUT IN SOCKET...THROUGH LOCK-IN FEATURE

No matter how rough the air, the tubes in an aircraft's radio will stay in their sockets—if those tubes are *Lock-Ins*. Specially designed "lock-in" locating lug on each tube keeps them in place—assuring firm socket contact.

ULTRA-HIGH FREQUENCIES...HANDLED WITH EASE

Lock-In is the tube specifically engineered to more than satisfy the requirements of today's sets, as well as handle ultra-high frequencies with ease! Electrical features include: short, direct connections . . . fewer welded joints—less loss; getter located on top . . . shorts eliminated by separation of getter material from leads. See *Sylvania Distributors* or write *Radio Division, Emporium, Pa.*

SYLVANIA ELECTRIC



SYLVANIA'S LOCK-IN TUBE...

. . . the radio tube whose electrical and mechanical superiority makes it the ideal choice for equipment in the air, on the road, marine radar, FM and television.